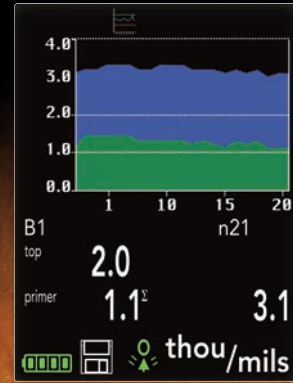


# PosiTector *200* Series

Coating Thickness  
Gages for measuring  
on Concrete, Wood,  
Plastic and more...



Advanced  
models  
measure up  
to 3 layers  
with graphics



Available on the  
App Store



**DeFelsko®**  
The Measure of Quality

# PosiTector® 200 Series

## All Gages Feature...

### Simple

- Ready to measure—no adjustment required for most applications
- RESET feature instantly restores factory settings

### Durable

- Solvent, acid, oil, water and dust resistant—weatherproof
- Shock-absorbing, protective rubber holster with belt clip
- Two year warranty on gage body AND probe

### Accurate

- Responsive transducers provide fast, accurate readings
- Certificate of Calibration showing traceability to NIST or PTB included
- Proven non-destructive technique conforms to ASTM D6132 and ISO 2808

### Versatile

- PosiTector body accepts all PosiTector probes easily converting from a coating thickness gage to a surface profile gage, dew point meter, hardness tester, soluble salt tester or wall thickness gage
- High contrast LCD with backlight display
- Flip Display enables right-side-up viewing
- Uses alkaline or rechargeable batteries (built-in charger)

### Powerful

- Continually displays/updates average, standard deviation, min/max thickness and number of readings while measuring
- Max Thick Mode displays the deepest ultrasonic echo eliminating the need to adjust the Lo Range — ideal for ignoring unwanted surface echos
- USB port for connection to a Mac/PC and to supply continuous power
- Every stored measurement is date and time stamped
- PosiSoft USB Drive—stored readings, graphs and screen captures can be accessed using universal PC/Mac web browsers or file explorers. No software required.
- Includes PosiSoft suite of software for viewing and reporting data

NEW

### Award Winning Compatibility!

- Coating Thickness
- Surface Profile
- Environmental Conditions
- Hardness
- Salt Contamination
- Ultrasonic Wall Thickness



### Select from a variety of measurement ranges

Probes	200B	200C	200D
Typical Applications	Polymer coatings on wood, plastic, etc.	Coatings on concrete, fiberglass, etc.	Thick, soft coatings such as polyurea, asphaltic neoprene, very thick polymers, etc.
Measurement Range*	13 – 1000 µm 0.5 – 40 mils	50 – 3800 µm 2 – 150 mils	50 – 7600 µm 2 – 300 mils
Accuracy	+/- (2 µm + 3% of reading) +/- (0.1 mil + 3% of reading)		+/- (20 µm + 3% of reading) +/- (1 mil + 3% of reading)
Minimum Layer Thickness^	13 µm 0.5 mil	50 µm 2 mils	500 µm 20 mils

\* Range limits apply to polymer coatings. D probe— polyurea range is 50–5000 µm (2–200 mils).

^For multiple-layer applications only. Dependent on material being tested.

## Select Standard or Advanced Features

### Standard Models

Includes ALL features as shown on left plus...

- Measure the total thickness of a coating system
- Storage of 250 readings—stored readings can be viewed or downloaded

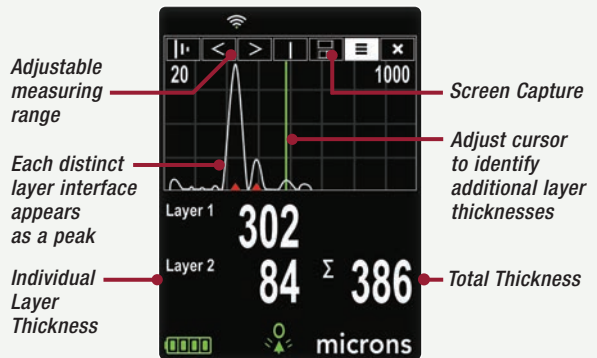
### Advanced Models

Includes ALL features as shown on left plus...

- Measure the total thickness of a coating system or up to 3 individual layer thicknesses in a multi-layer system. Also features graphic readout for detailed analysis of the coating system.
- Storage of 100,000 readings from multiple probes in up to 1,000 batches and sub-batches
- Graphics mode with screen capture
- Live graphing of measurement data
- WiFi technology wirelessly synchronizes with PosiSoft.net and downloads software updates
- Bluetooth® 4.0 Technology for data transfer to a mobile device running the PosiTector App or optional portable printer
- Batch/Reading annotation—add notes and change batch names with onscreen QWERTY keyboard
- Integrate with third-party software, drones, ROVs, PLCs, and robotic devices using several industry-standard communication protocols

For a complete comparison of the Standard and Advanced features visit [www.defelsko.com/p200](http://www.defelsko.com/p200)

### Graphic display provides detailed analysis of coatings



Advanced Model shown in Graphics mode

### All gages come complete

with ultrasonic gel, precision plastic shims, protective rubber holster with belt clip, wrist strap, 3 AAA alkaline batteries, instructions, nylon carrying case with shoulder strap, protective lens shield, Long Form Certificate of Calibration traceable to NIST or PTB, USB cable, PosiSoft Software, two year warranty.



**Size:** 135 x 61 x 28 mm (5.25" x 2.4" x 1.1")

**Weight:** 140 g (4.9 oz.) without batteries  
Conforms to ASTM D6132 and ISO 2808

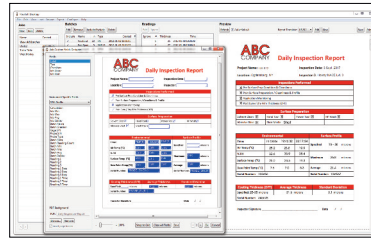
# PosiSoft® Suite of Software

Four FREE and unique ways to view and report your PosiTector and PosiTest data

## PosiSoft Desktop — PC/Mac

Powerful desktop software for downloading, viewing, printing and archiving measurement data. No internet connection required.

- Import readings directly from the gage via USB or from legacy PosiSoft desktop versions
- Synchronize measurement data including readings, notes and pictures to and from PosiSoft.net
- Import/Export Templates and Jobs to share with other users
- Import PDF forms and overlay **Custom Fields** for automatic population of inspection and measurement data
- Report preview automatically refreshes as changes are made



### Prompted Batch Mode

Create pre-defined batches with onscreen text and image prompts for each reading and upload to PosiTector 6000 gages (Advanced models only).

- Ideal for ensuring a consistent measurement pattern for repetitive jobs or when specific measurement locations are required
- Create and store multiple templates for different jobs



## PosiTector App — Mobile

Mobile app connects PosiTector Advanced instruments, the PosiTector SmartLink and the PosiTest AT-A to your iOS or Android smart device.

- Auto pairing Bluetooth BLE connection
- Automatically generate user-formatted reports and share via email, text, cloud storage services like Dropbox, and more
- Export readings to PosiSoft Desktop or synchronize readings to and from PosiSoft.net for further reporting and archival options

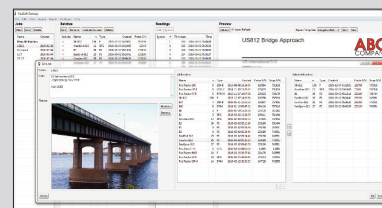
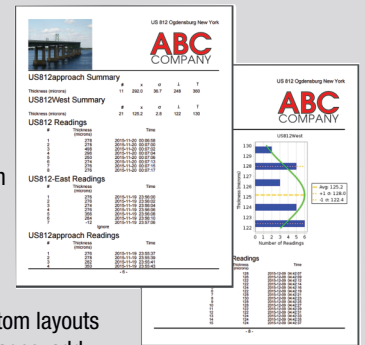


## PosiSoft Custom PDF Report Generator

Easily create reports from your measurement data in seconds.

featured on  
PosiSoft Desktop  
PosiSoft.net  
PosiTector App

- Include inspection information such as on-site pictures, screen captures, notes and more to communicate important details
- Create and save multiple custom layouts as templates – insert cover pages, add logos/images, and select font and point size
- Select the information to include for each product type – charts, histograms, readings, time stamps and more
- Compile multi-batch reports from one or more probes and instrument types
- Export readings as comma separated value (.CSV) files which can easily be imported into Excel and other supporting applications

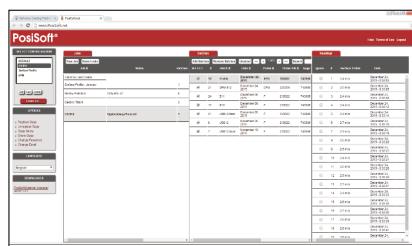


**Jobs** feature consolidates batches into groups to keep measurement data organized and to quickly create multi-batch reports (not available on PosiTector App)

## PosiSoft.net — Web-based

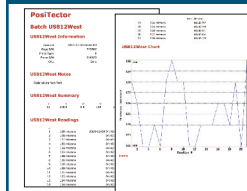
A web-based application offering secure centralized management of readings. Access your data from any web-connected device.

- Synchronize data when connected via USB or WiFi
- Synchronize measurement data including readings, notes and pictures with PosiSoft Desktop and PosiTector App
- Securely store measurement data in the cloud and share with authorized users via a secure login



Jobs Batches Readings

## PosiSoft USB Drive — Gage Based



A simple gage interface to retrieve data in a manner similar to USB flash drives, cameras, or digital audio players. No software to install or internet connection required.

- View and print readings and graphs using universal PC/Mac web browsers and file explorers
- Measurement data can be printed quickly from a formatted HTML report or exported in .CSV format for further analysis in spreadsheets
- Simple file management - Copy and paste measurement data from the PosiTector to a local folder on your computer, network folder or cloud drive
- Access stored screen captures (snapshots) of the PosiTector display



PosiTector and PosiTest AT-A instruments can integrate with third-party software, drones, ROVs, PLCs, and robotic devices using several industry-standard communication protocols.

## PosiTector Developer Resources

including Bluetooth 4.0, WiFi, USB Keyboard, and USB Serial